

BRECON External Vibrators

9000/10800rpm, IP65



18 219

9000rpm, 150Hz

| Part Number | Mechanical Centrifugal force [kN] | Electrical | | | Dimensions | | | | | | | | |
|-------------|--------------------------------------|-------------|------------------|-------------------|-----------------|--|-----|-----|-----|------|----|-------------|---------|
| | | Voltage [V] | Power Input [kW] | Rated current [A] | L x W x H [mm] | | h | l | b | d | m | Weight [Kg] | Picture |
| 18 219 212 | 10 (8)* | 42 | 1,20 | 18,3 | 295 x 190 x 185 | | 100 | 90 | 154 | 4x13 | 70 | 14 | C |
| 18 213 112 | 16 (13,5)* | 42 | 1,80 | 28 | 350 x 250 x 220 | | 125 | 100 | 200 | 4x17 | 90 | 25 | C |

10800rpm, 180Hz

| | | | | | | | | | | | | | |
|------------|----------|-----|------|-----|-----------------|--|-----|-----|-----|------|----|----|---|
| 18 216 015 | 18 (15)* | 230 | 2,80 | 8,1 | 370 x 250 x 220 | | 125 | 100 | 200 | 4x17 | 90 | 26 | C |
| 18 219 215 | 10 (8)* | 230 | 1,20 | 4,3 | 295 x 190 x 185 | | 100 | 90 | 154 | 4x13 | 70 | 16 | C |

*Values in parentheses are recommended for use of 8 hours or more

BRECON External Vibrators

12000rpm, IP65



18 219

12000rpm, 200Hz

| Part Number | Mechanical Centrifugal force [kN] | Electrical | | | Dimensions | | | | | | | | |
|-------------|--------------------------------------|-------------|------------------|-------------------|-----------------|--|-----|-----|-----|------|----|-------------|---------|
| | | Voltage [V] | Power input [kW] | Rated current [A] | L x W x H [mm] | | h | l | b | d | m | Weight [Kg] | Picture |
| 18 219 203 | 10 (8,0)* | 250 | 1,50 | 4,10 | 295 x 190 x 185 | | 100 | 90 | 154 | 4x13 | 70 | 14 | C |
| 18 213 103 | 14 (12,5)* | 250 | 2,40 | 6,50 | 350 x 250 x 220 | | 125 | 100 | 200 | 4x17 | 90 | 26 | C |
| 18 216 203 | 18 (15,0)* | 250 | 3,10 | 8,20 | 370 x 250 x 220 | | 125 | 100 | 200 | 4x17 | 90 | 26 | C |

*Values in parentheses are recommended for use of 8 hours or more

1

External Vibrators

BRECON External Vibrators

6000rpm, IP65



18 212

| 6000rpm, 200Hz | | | | | | | | | | | | |
|----------------|--------------------------------------|-------------|------------------|-------------------|-----------------|-----|-----|-----|------|----|-------------|---------|
| Part Number | Mechanical Centrifugal force [kN] | Electrical | | | Dimensions | | | | | | | |
| | | Voltage [V] | Power input [kW] | Rated current [A] | L x W x H [mm] | h | l | b | d | m | Weight [Kg] | Picture |
| 18 212 203 | 8,0 | 250 | 0,68 | 2,10 | 260 x 160 x 165 | 90 | 90 | 125 | 4x13 | 60 | 9 | C |
| 18 212 209 | 8,0 | 42 | 0,68 | 12,60 | 260 x 160 x 165 | 90 | 90 | 125 | 4x13 | 60 | 9 | C |
| 18 220 203 | 10,0 | 250 | 1,00 | 3,20 | 295 x 190 x 185 | 100 | 90 | 154 | 4x13 | 70 | 15 | C |
| 18 220 209 | 10,0 | 42 | 1,00 | 19,00 | 295 x 190 x 185 | 100 | 90 | 154 | 4x13 | 70 | 15 | C |
| 18 220 251* | 10,0 | 250 | 1,00 | 3,20 | 295 x 147 x 185 | 100 | 65 | 125 | 4x13 | 70 | 15 | C |
| 18 221 203 | 12,0 | 250 | 1,20 | 3,60 | 295 x 190 x 185 | 100 | 90 | 154 | 4x13 | 70 | 15 | C |
| 18 221 251* | 12,0 | 250 | 1,20 | 3,60 | 295 x 147 x 185 | 100 | 65 | 125 | 4x13 | 70 | 15 | C |
| 18 221 205 | 14,0 | 250 | 1,20 | 3,60 | 295 x 190 x 185 | 100 | 90 | 154 | 4x12 | 70 | 15 | C |
| 18 221 209 | 14,0 | 42 | 1,20 | 21,50 | 295 x 190 x 185 | 100 | 90 | 154 | 4x13 | 70 | 15 | C |
| 18 221 210* | 14,0 | 42 | 1,20 | 21,50 | 295 x 147 x 185 | 100 | 120 | 120 | 4x14 | 70 | 15 | C |
| 18 221 207* | 14,0 | 250 | 1,20 | 3,60 | 295 x 147 x 185 | 100 | 65 | 125 | 4x15 | 70 | 15 | C |
| 18 215 203 | 16,0 | 250 | 2,00 | 5,70 | 350 x 250 x 220 | 125 | 100 | 200 | 4x17 | 90 | 27 | C |
| 18 217 203 | 18,0 | 250 | 2,40 | 7,50 | 370 x 250 x 220 | 125 | 100 | 200 | 4x17 | 90 | 27 | C |
| 18 218 203 | 20,0 | 250 | 2,60 | 7,90 | 370 x 250 x 220 | 125 | 100 | 200 | 4x17 | 90 | 27 | C |

*Slim version

BRECON External Vibrators

6000rpm, IP65



| 6000rpm, 100Hz | | | | | | | | | | | | |
|----------------|--------------------------------------|-------------|------------------|-------------------|-----------------|-----|-----|-----|------|----|-------------|---------|
| Part Number | Mechanical Centrifugal force [kN] | Electrical | | | Dimensions | | | | | | | |
| | | Voltage [V] | Power input [kW] | Rated current [A] | L x W x H [mm] | h | l | b | d | m | Weight [Kg] | Picture |
| 18 221 351* | 12,0 | 380 | 0,6 | 2,3 | 295 x 147 x 185 | 100 | 65 | 125 | 4x13 | 70 | 15 | C |
| 18 221 305 | 14,0 | 380 | 0,6 | 2,3 | 295 x 190 x 185 | 100 | 90 | 154 | 4x13 | 70 | 15 | C |
| 18 221 307* | 14,0 | 380 | 0,6 | 2,3 | 295 x 147 x 185 | 100 | 120 | 120 | 4x17 | 70 | 15 | C |

*Slim version

2

Control Units

BRECON Frequency Converters

IP54



| Part numbers | Secondary | | | | Primary | | Weight [kg] | Dimensions H x B x T [mm] |
|-----------------|--|-----------------------------------|----------------------------------|----------------------------------|-------------------------------------|----------------|----------------|---------------------------------|
| | Power output with 250V / 200Hz [kVA] | Voltage at 200 Hz 3~ [V] | Con- tinous current [A] | Peak current (60 s) [A] | Voltage at 50/60 HZ 3~ [V] | Current [A] | | |
| EW 578 / 4,0 E5 | 4,0 | 250 | 9,0 | 13,5 | 400 | 14,0 | 35 | 500 x 500 x 210 |
| EW 578 / 5,5 E5 | 5,5 | 250 | 13,0 | 19,5 | 400 | 13,0 | 35 | 500 x 500 x 300 |
| EW 578 / 7,5 E5 | 7,5 | 250 | 16,5 | 24,5 | 400 | 15,4 | 60 | 500 x 700 x 250 |
| EW 578 / 11 E5 | 11,0 | 250 | 25,0 | 34,5 | 400 | 23,0 | 50 | 760 x 760 x 300 |
| EW 578 / 14 E5 | 15,0 | 250 | 32,0 | 48,0 | 400 | 27,4 | 85 | 760 x 760 x 300 |
| EW 578 / 18 E5 | 18,5 | 250 | 40,0 | 60,0 | 400 | 34,0 | 75 | 760 x 760 x 300 |
| EW 578 / 20 E5 | 22,0 | 250 | 46,0 | 69,0 | 400 | 40,0 | 85 | 760 x 760 x 300 |
| EW 578 / 28 E5 | 30,0 | 250 | 60,0 | 90,0 | 400 | 52,0 | 80 | 600 x 1000 x 400 |
| EW 578 / 34 E5 | 34,0 | 250 | 75,0 | 112,5 | 400 | 66,0 | 100 | 1000 x 800 x 400 |

Frequency Converters with higher output power available on request

Electronically adjustable digital frequency converter, in modular design, high pulse frequency, sinusoidal output current, digital frequency indicator for stepless frequency changing for HF external vibrators, automatic current limiting, short circuit proof, filtered ventilation, secondary motor choke, mounted in steel-sheet cabinet.

BRECON Radio Controls



| Part number | Equipment | Remarks | Dimensions [mm] | Weight [Kg] |
|-------------------------|---|--|-------------------------------|-------------|
| EW 560 / 3078 | 2 channels, 2 transmitters, 1 receiver | Transmitter frequency: 434 MHz Transmitter energy: $1 \times 10^{-3} \text{W}$ | Transmitter: 110 x 75 x 25 | 0,15 |
| EW 560 / 3079 | 3 channels, 2 transmitters, 1 receiver | Supply voltage: • transmitter: 3 x 1,5V battery • receiver: 230V / 50Hz | Receiver: 120 x 115 x 50 | 0,90 |
| EW 560 / 3080 | 4 channels, 2 transmitters, 1 receivers | Output receiver: Potential-free relay contact per channel; breaking capacity 230V / 5A | | |
| Inquire for part number | up to 8 channels | | | |

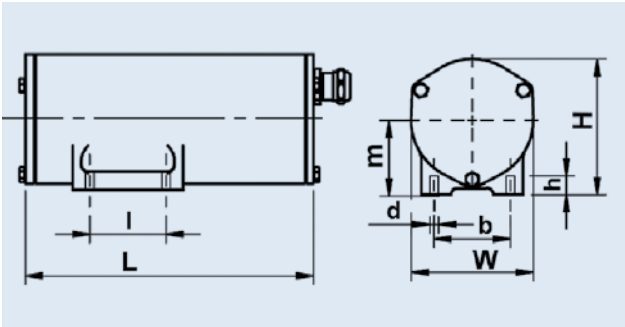
BRECON Large Display Indicators



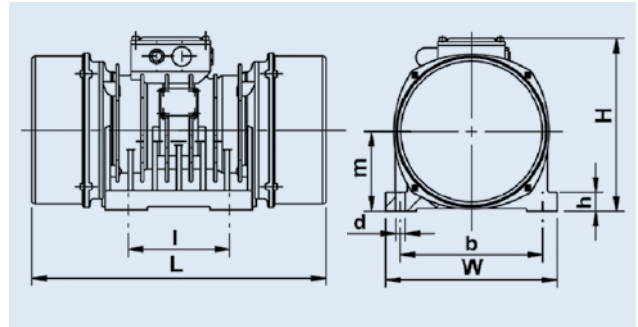
EW560 / 2189

| Part number | Remark |
|---------------|---|
| EW 560 / 2188 | 1-field indicator, 3 characters, LED (red), non -reflective, adjustable display |
| EW 560 / 2189 | 2-field indicator, 3 characters, LED (red), non -reflective, adjustable display |

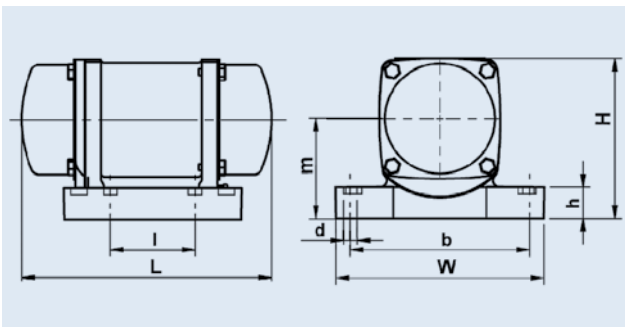
Picture A



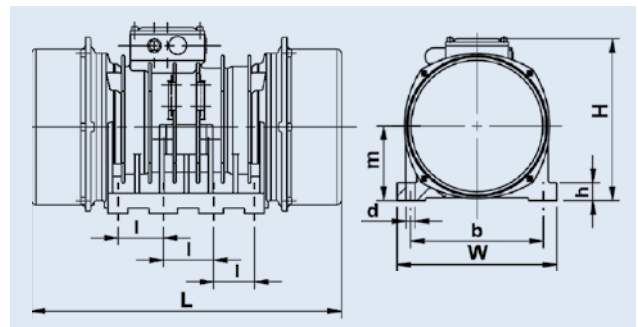
Picture D



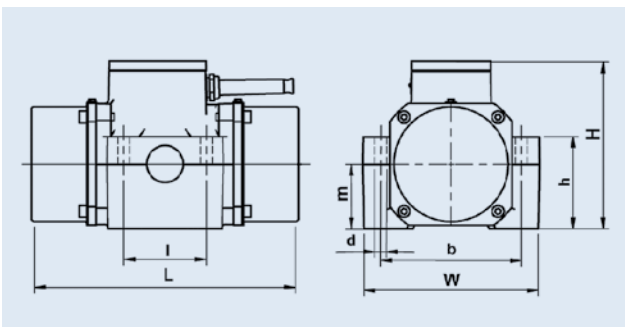
Picture B



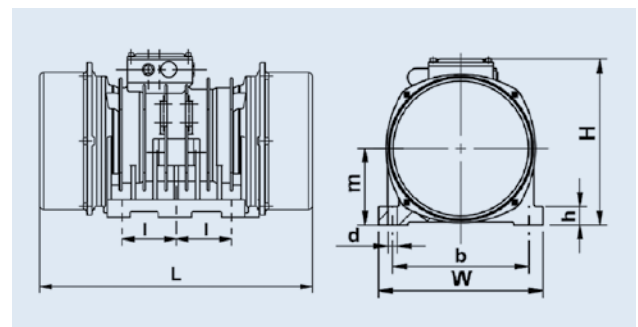
Picture E



Picture C



Picture F



2





BRECON

Vibrationstechnik GmbH

P.O. Box 45 01 69
D-50876 Cologne

Telephone +49 [0] 221 9 54 42 70
Telefax +49 [0] 221 9 54 42 77

info@brecon-vibration.com
www.brecon-vibration.com